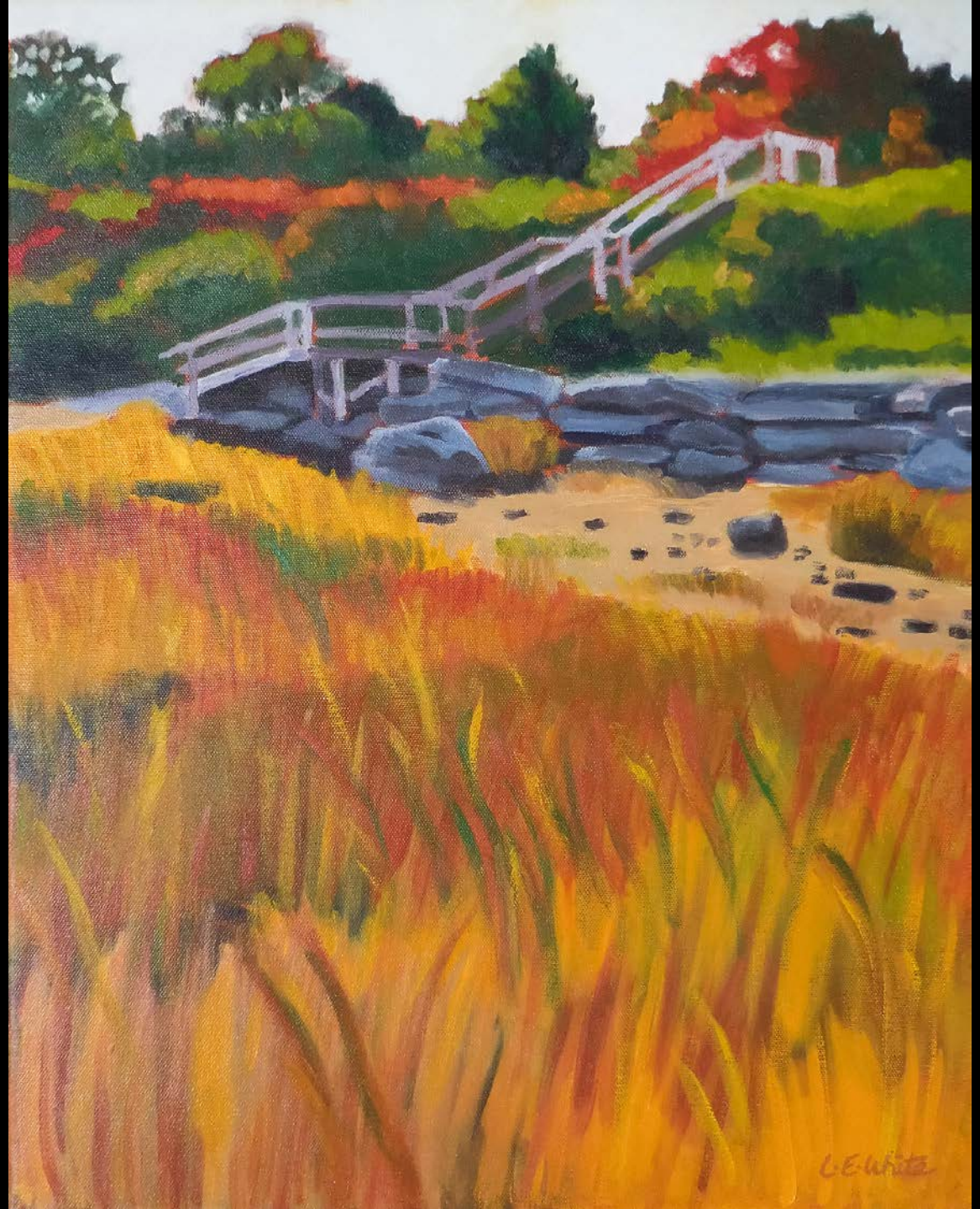


Lucinda E. White



Lucinda E. White
Chasing America, 2015
Oil on canvas, 24 x 18 in.

Lucinda E. White
Autumn Shore, 2014
Oil on canvas, 20 x 16 in.





Lucinda E. White
Ebb Tide, 2014
Oil on canvas, 24 x 30 in.

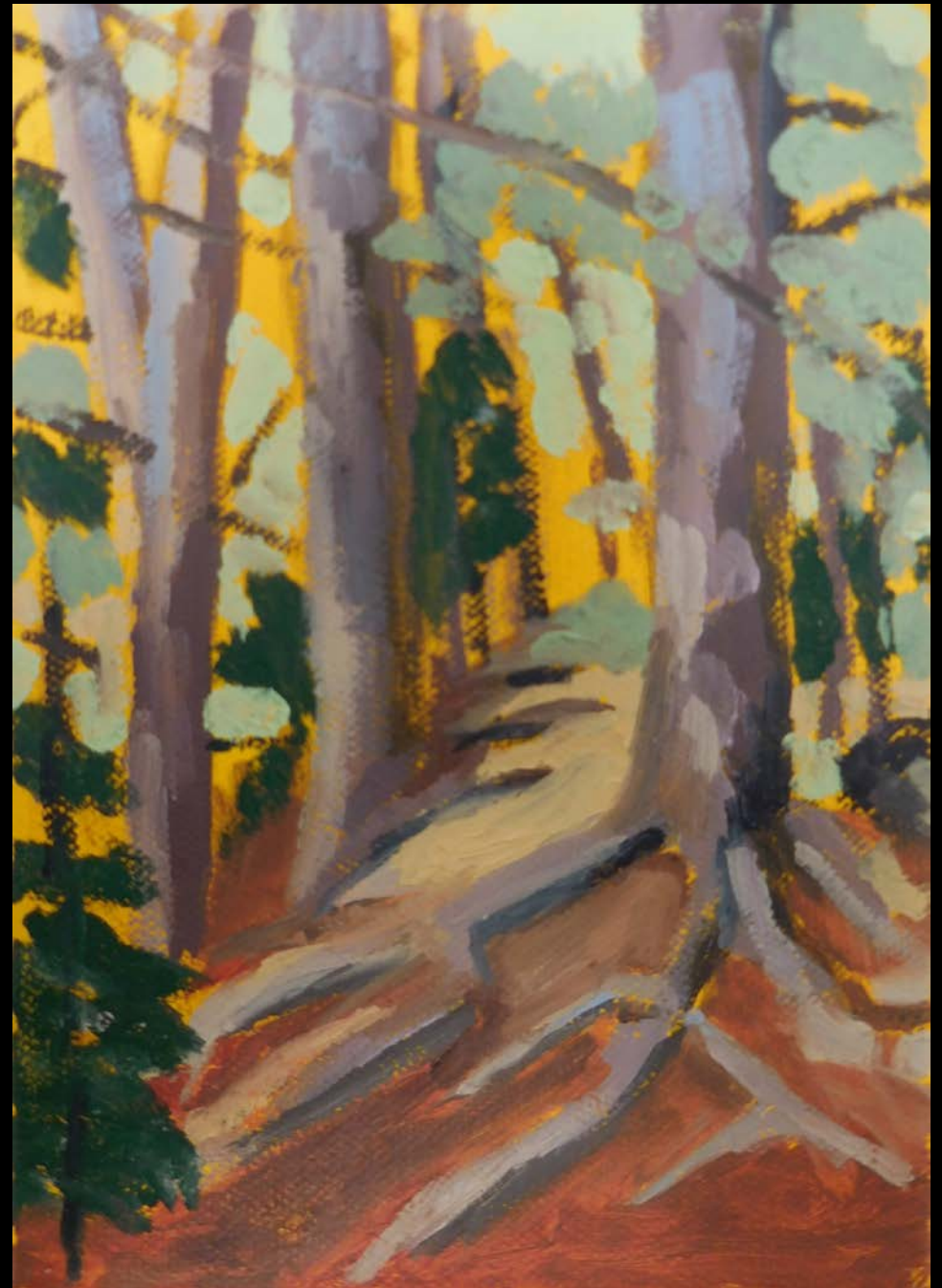


Lucinda E. White
Siblings, 2015
Oil on canvas, 16 x 20 in.



Lucinda E. White
*Lake of the Clouds Hut
from Mt. Washington*
2016, oil on canvas
18 x 24 in.

On view in the Alumnae House
Lucinda E. White
Path I, 2016
Oil on canvas, 7 x 5 in.



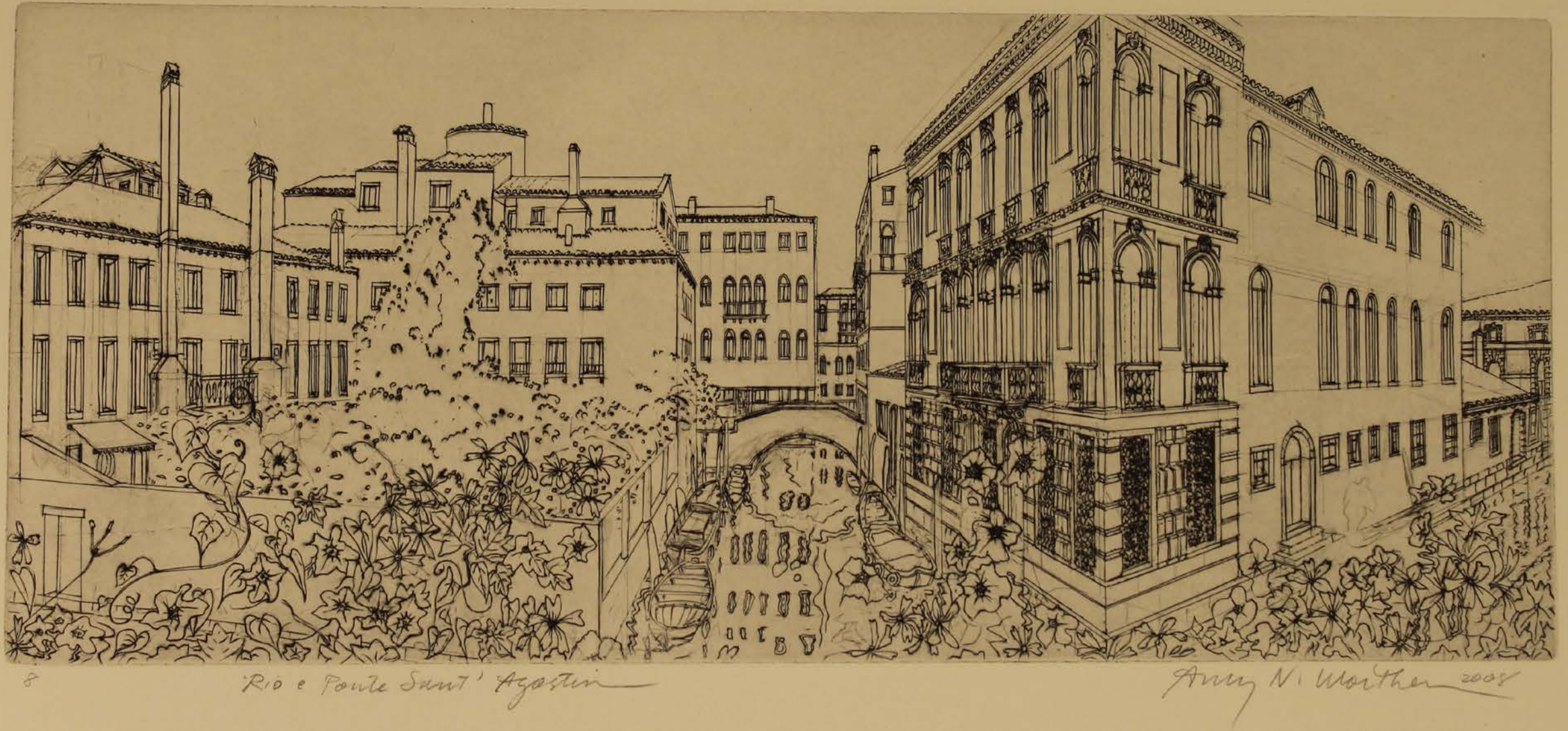
Amy Namowitz Worthen



28/40

Amy Namowitz Worthen, *Temple of Thieves*, 1996, engraving on paper, 15 x 22 in.

Worthen 1996



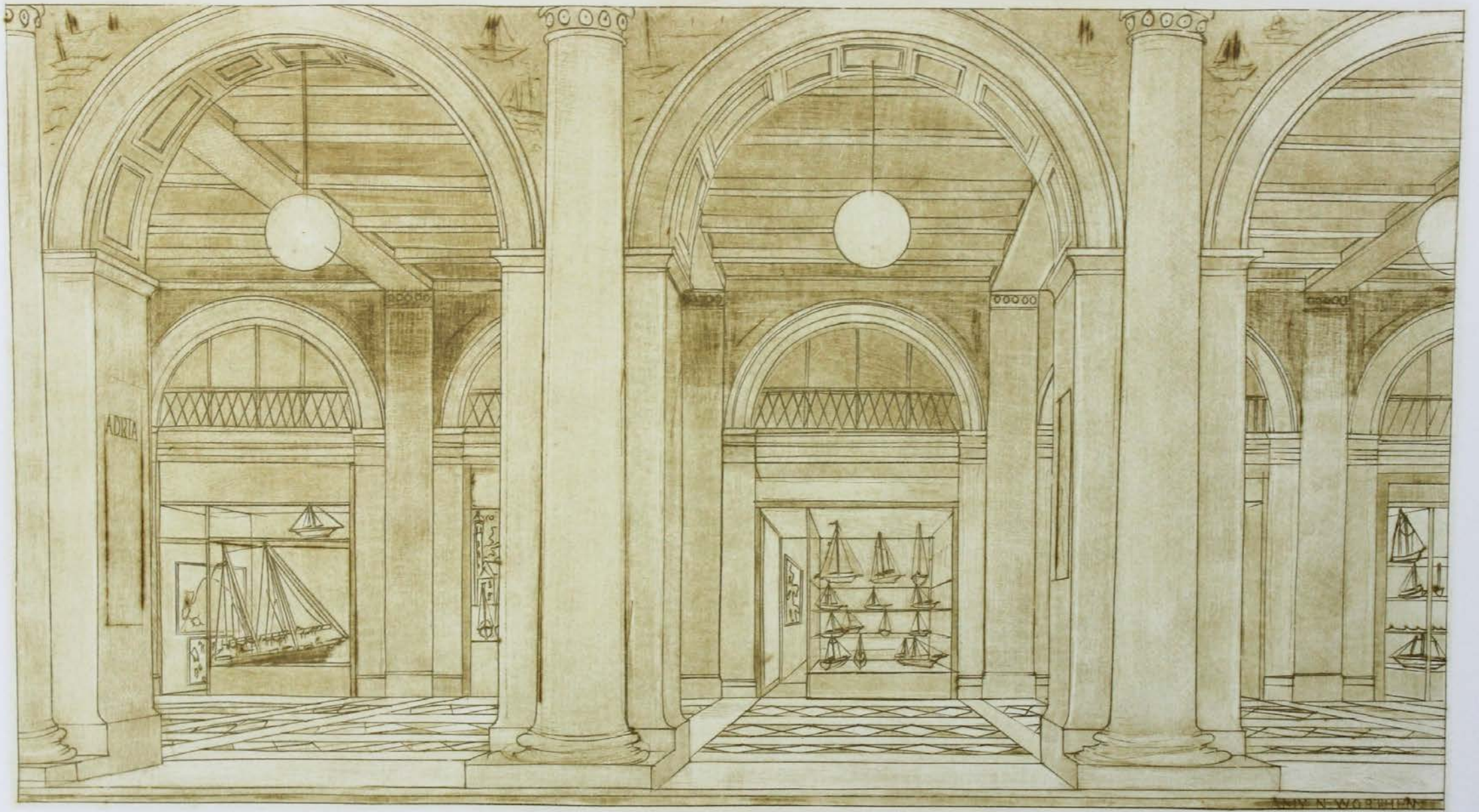
8
Rio e Ponte Sant'Agostin

Amy N. Worthen 2008

Amy Namowitz Worthen, *Terrace View - Rio e Ponte Sant'Agostin*, 2008, engraving on paper, 17 x 28 in.

Amy Namowitz Worthen
Vanitas, 1987
Engraving on paper, 24 x 20 in.





Amy Namowitz Worthen

The Voyage of the Chiaretta, 1999, engraving, roulette, and mezzotint on paper, 13 $\frac{3}{4}$ x 19 $\frac{3}{4}$ in.



On view in the Alumnae House

Amy Namowitz Worthen

Rialto, Correr, Acqua Alta, 2005, engraving and roulette on paper, 13 x 25 $\frac{3}{4}$ in.

Annie Aleskovsky Zeybekoglu



Annie Aleskovsky Zeybekoglu
Serenity, 2016

Mulberry paper, waxed linen thread, leather, metal findings
13 x 7 x 2 in.

Annie Aleskovsky Zeybekoglu
Entanglements, 2016

Mulberry paper, wax, hemp string, wire, metal findings
16 x 12 x 1 in.





Annie Aleskovsky Zeybekoglu

Emma's Reverie, 2016

Mulberry paper, sari silk, waxed linen thread, leather, metal findings
16 x 12 x 2 in.

Annie Aleskovsky Zeybekoglu

Dusk, 2016

Mulberry paper, waxed linen thread, leather, metal findings

12 x 6.5 in.





On view in the Alumnae House

Annie Aleskovsky Zeybekoglu

Reading Between the Lines, 2016

Rolled magazine pages, waxed linen thread,
leather, metal findings, 16 x 1 x 21.5 in.

A handwritten signature in green ink that reads "Smith '67". The "S" is large and loops around the "m". The "'67" is written in a simpler, more upright style.

50th Reunion **Virtual** Art Exhibition

MEET THE ARTISTS

Friday, May 19, 8:30 to 9:30 PM

Cutter Living Room

Please consult the exhibition binders here at the Cutter House and
at the Alumnae House for artist information and contact details.

Smith '67

50TH REUNION ART EXHIBITION



Francie Allen



Jane Banquet



Elaine Sassano Bolin



Rosalyn Driscoll



Aida Fish



Elizabeth Olson Goodring Pene



Nancy Golerling



Carole Harrel



Edith Haroberger (Edith Louise Weber)



Eileen S. Kane (Eileen S. Cohen)



Hannah Achterberg Kins



Anna Markus Treston



Susan Alexander Michod



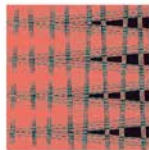
Susan Murray Lister



Stearne Opton



Donna Lopatin Radner



Leah Sigel (Louise Sigel)



Lucinda E. White



Amy Xianowitz Worthen



Annie Aleksovskiy Zeybelogiu

Alumnae House, Smith College

33 Elm St., Northampton, MA 01063

April 26 - August 4, 2017

ACADEMIC YEAR: MONDAY - FRIDAY: 8:30AM TO 4:30PM

REUNION: THURSDAY: 8:30AM TO 9PM

FRIDAY: 8:30AM TO 10PM

SATURDAY: 8AM - 10PM

SUNDAY: 8AM - 1PM

SUMMER: MONDAY - FRIDAY: 8AM TO 4PM

All images are details.

Be sure to visit our
50th Reunion Art Exhibition
Alumnae House
April 26 - August 4, 2017

A handwritten signature in green ink that reads "Smith '67". The "S" is large and loops around the "m". The "'67" is written in a simple, slightly slanted style.

Exhibition Team

Amy Namowitz Worthen, Exhibition Curator

Suzanne Talbott, Juror

Naya Bricher '13, Exhibition Facilitator

Acknowledgments

Justin W. Anderson

Elaine Sussman Belvin

Annie Croteau

Jonelle Dennis

Paula Barker Duffy

Ellen Kipnis Kanner

Elizabeth Pols '75